

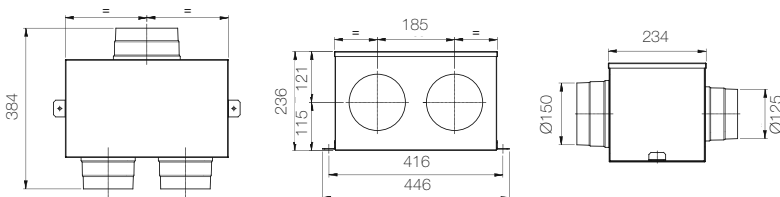
# AQ Air Distribution



## PLMP 150 2x125 - PLML 150 2x125

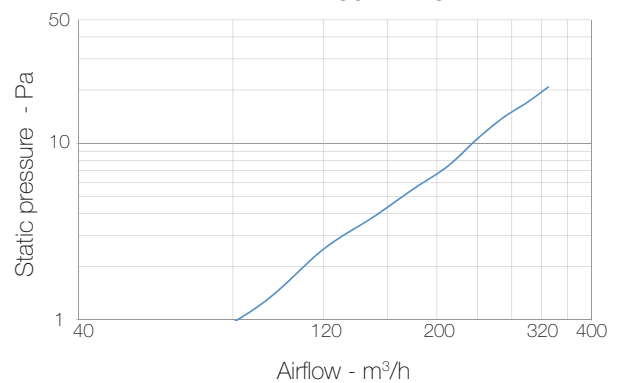
Distribution plenum in galvanised steel with acoustic lining, easy to inspect.  
1 inlet Ø150mm - 2 rear (PLMP) or side (PLML) outlets Ø125mm.

Model	PLMP 150 2x125	PLML 150 2x125
Code	000575	000580

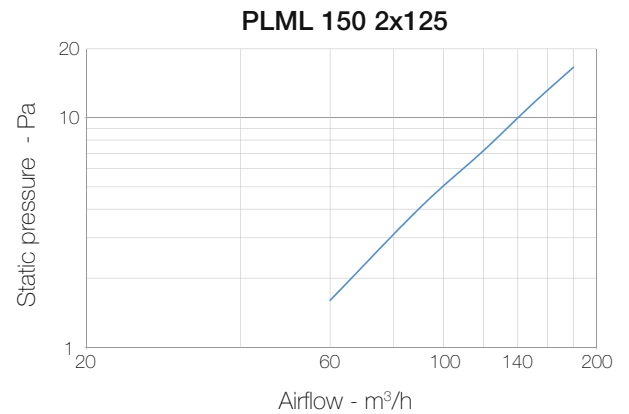
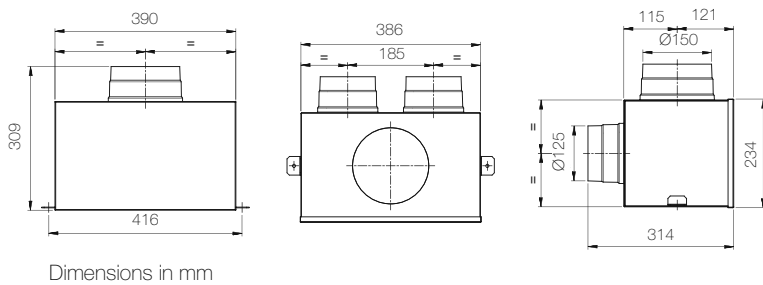


Dimensions in mm

## PLMP 150 2x125



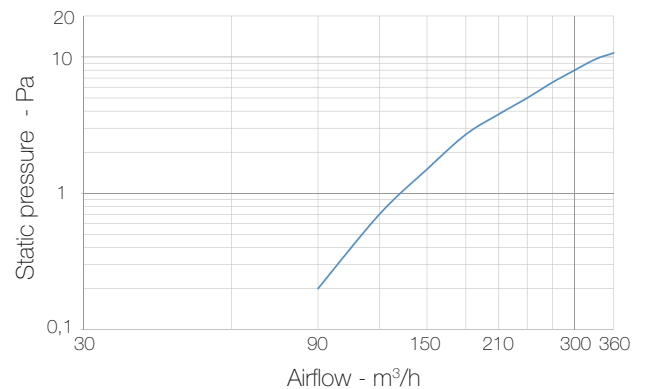
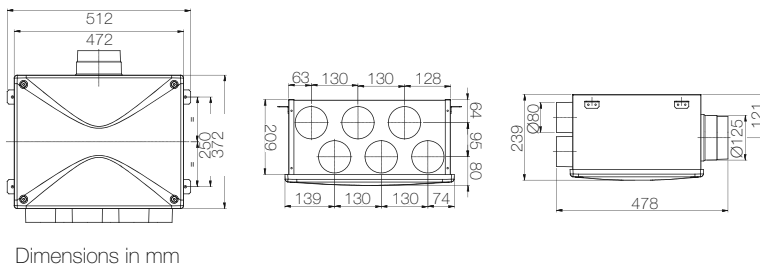
# AQ Air Distribution



## PLMP 125 6x75

Distribution plenum in galvanised steel with acoustic lining, easy to inspect.  
1 inlet Ø125mm - 6 rear outlets Ø80mm (suitable for semi-rigid duct CNDFLB 75/63) - 3 caps.

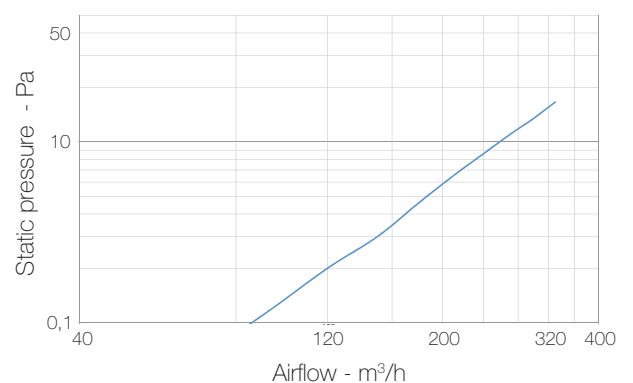
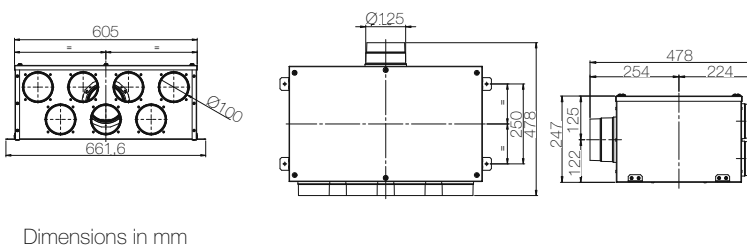
Model	PLMP 125 6x75
Code	000002



## PLMP 125 7x90

Distribution plenum in galvanised steel with acoustic lining, easy to inspect.  
1 inlet Ø125mm - 7 rear outlets Ø100mm (suitable for semi-rigid duct CNDFLB 90/75) - 3 caps.

Model	PLMP 125 7x90
Code	001480



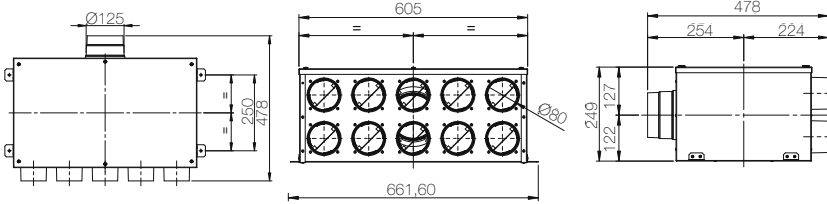
# AQ Air Distribution



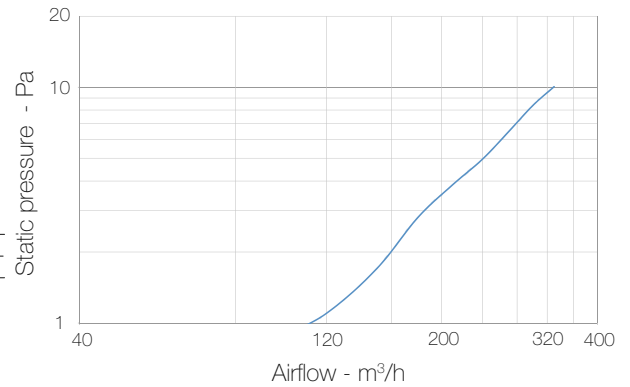
## PLMP 125 10x75

Distribution plenum in galvanised steel with acoustic lining, easy to inspect.  
1 inlet  $\text{\O}125\text{mm}$  - 10 rear outlets  $\text{\O}80\text{mm}$  (suitable for semi-rigid duct CNDFLB 75/63) - 5 caps.

Model	PLMP 125 10x75
Code	001406



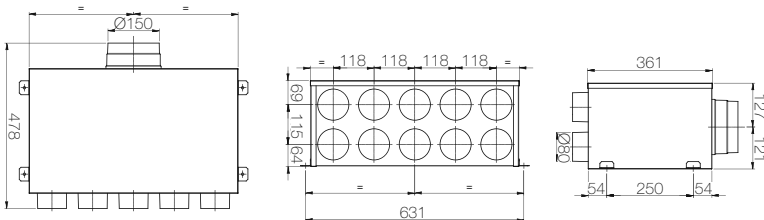
Dimensions in mm



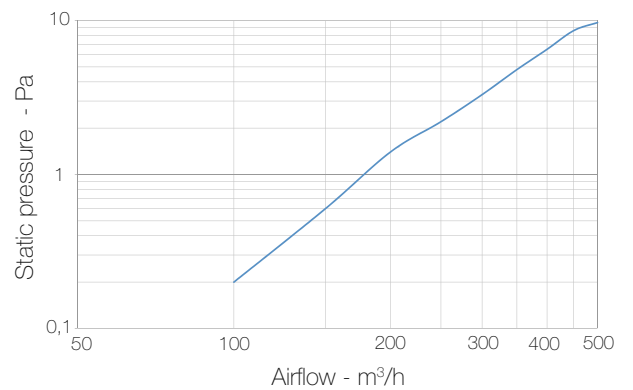
## PLMP 150 10x75

Distribution plenum in galvanised steel with acoustic lining, easy to inspect.  
1 inlet  $\text{\O}150\text{mm}$  - 10 rear outlets  $\text{\O}80\text{mm}$  (suitable for semi-rigid duct CNDFLB 75/63) - 5 caps.

Model	PLMP 150 10x75
Code	000003



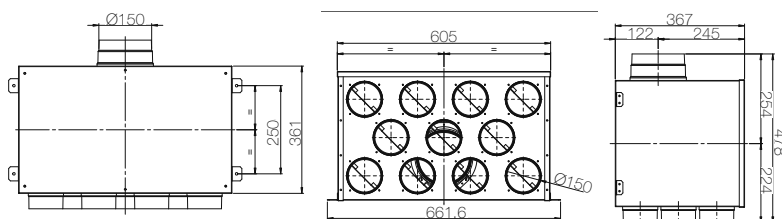
Dimensions in mm



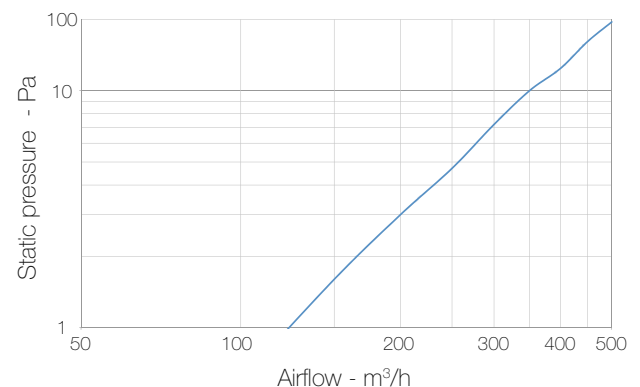
## PLMP 150 11x90

Distribution plenum in galvanised steel with acoustic lining, easy to inspect.  
1 inlet  $\text{\O}150\text{mm}$  - 11 rear outlets  $\text{\O}100\text{mm}$  (suitable for semi-rigid duct CNDFLB 75/63) - 5 caps.

Model	PLMP 150 11x90
Code	001546



Dimensions in mm



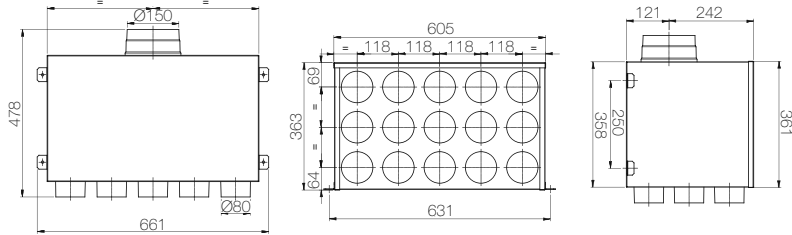
# AQ Air Distribution



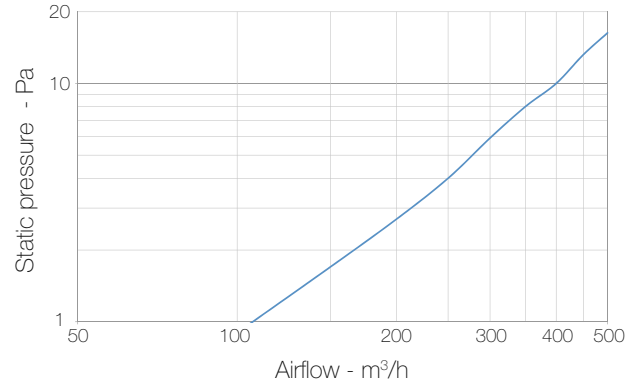
## PLMP 150 15x75

Distribution plenum in galvanised steel with acoustic lining, easy to inspect.  
1 inlet  $\text{\O}150\text{mm}$  - 15 rear outlets  $\text{\O}80\text{mm}$  (suitable for semi-rigid duct CNDFLB 75/63) - 7 caps.

Model	PLMP 150 15x75
Code	000004

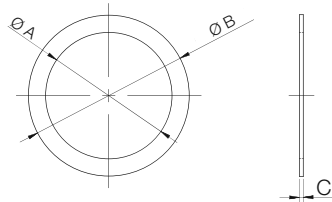


Dimensions in mm



## KORB

Set of sealing rings for round duct.



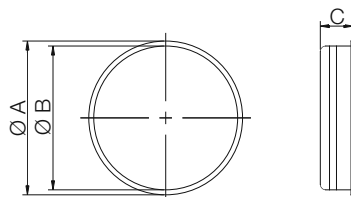
Model	KORB 75	KORB 90
Code	000060	001545
$\text{\O} A$	64	78
$\text{\O} B$	81,5	92,5
C	2	2

Dimensions in mm



## KTAP

Set of plastic caps to close the non-used spigot or to protect them from dust.



Model	KTAP 75	KTAP 90
Code	CPP00008	001623
$\text{\O} A$	85	99
$\text{\O} B$	79,5	96,5
C	18	19

Dimensions in mm